

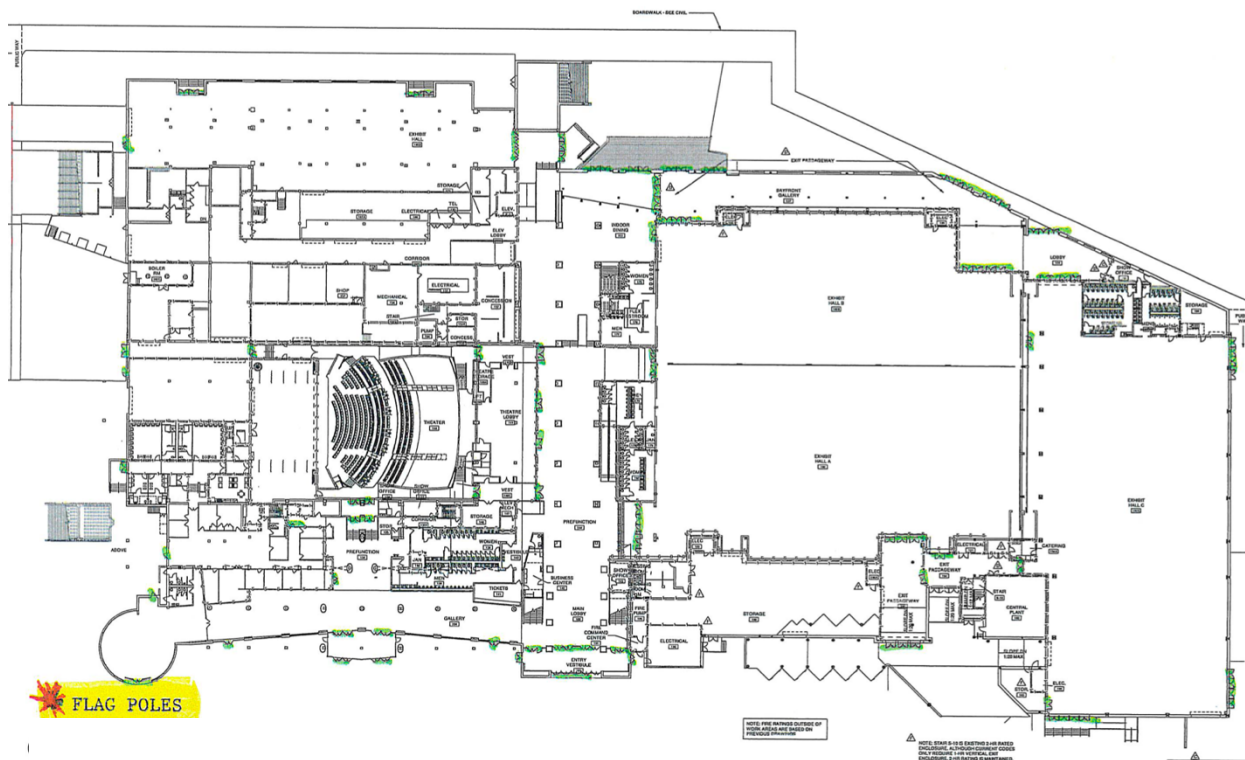
Emergency Plans

Convention Center



In the case of emergency, all participants should exit the Convention Center via the nearest exit. Walk around to the front parking lot and look for your regional sign. Once attendance is taken, regional advisors will report to the MASC Executive Director at the front flag pole (south side main parking lot).

 DESIGNATED EVACUATION MEETING POINT
SOUTH SIDE MAIN PARKING LOT BY FLAG POLES



Hotel Emergency Plans



Advisors should share emergency plans with their students at their designated hotels. The plan should include a meeting place outside of the hotel should evacuation be necessary. Regional advisors should notify the MASC executive director if there is an emergency evacuation.